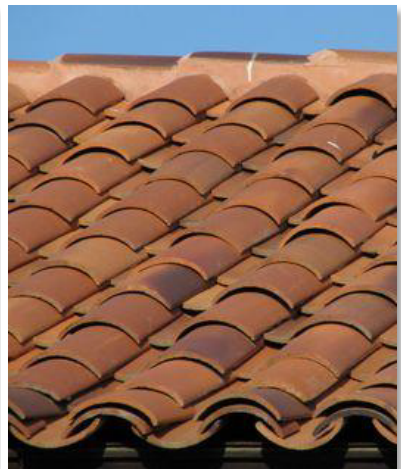


Using Student Analytics Dashboards

Exercise Book



■ Activity 1: First Exploration & Customizations

DEMO QUESTION: How many degrees does Stanford offer?

DASHBOARD	Academic Structure Components
REPORT TAB	Degrees
SELECTION CRITERIA	(default)
VIEW	Degrees by Level and Type
Any Re-sorting or Re-grouping?	(see example below)

PRACTICE RESULT CUSTOMIZATION

Degrees at Stanford

As of 11/17/2014

Time run: 11/17/2015 4:24:19 PM

These reports represent PeopleSoft PS_DEGREE_TBL information with added attributes of Degree Levels (U-G, B-M-D) and Type (A,P).

The reports have the following filters applied:

-- Only degrees ever offered at Stanford are shown

Degree Currently Offered Ind

Y

Acad-Prof Degree Type Long Desc	U-G Degree Level Long Desc	B-M-D Degree Level Desc	Degree Code	Degree Formal Desc
Academic	Undergraduate	Bachelor's	B	Bachelor (Undeclared)
			BA	Bachelor of Arts
			BAS	Bachelor of Arts and Science
			BS	Bachelor of Science
Academic	Graduate	Master's	ENG	Engineer
			JSM	Master of the Science of Law
			LLM	Master of Laws
			MA	Master of Arts
			MFA	Master of Fine Arts
			MLA	Master of Liberal Arts
			MLS	Master of Legal Studies
			MPP	Master of Public Policy
		MS	Master of Science	
		Professional		Doctoral
	JSD			Doctor of the Science of Law
	PHD			Doctor of Philosophy
		Master's	MBA	Master of Business Administration
		Doctoral	JD	Doctor of Jurisprudence
			MD	Doctor of Medicine

To create the above customized version of a Degree report, you will need to:

- **Move a column up** to being a section or a prompt
- **Exclude** many columns (be very careful about "Hiding", can't undo as easily)
- **Move a column to the left** to force a different grouping level
- **Re-sort a column** to be descending sort to list Undergraduates first

PRACTICE LOOKING AT OTHER REPORT TABS IN THIS DASHBOARD

1. Do all 7 schools have subplans? Hint: Pick a good view to use.
(Bus/E3/Ed/Eng/H&S/Law/Med)
Which school has the fewest?
2. What does the Acad Org "REES" stand for?.
3. What are the organizational subdivisions in the School of Education, below Department level?

Activity 1: ANSWERS & HOW THEY WERE GOTTEN

1. Do all 7 schools have subplans? (Bus/E3/Ed/Eng/H&S/Law/Med) **YES**

Which school has the fewest? **Law**

DASHBOARD	Academic Structure Components
REPORT TAB	Academic Subplan
SELECTION CRITERIA	(default)
VIEW	Subplans by School and Plan
Any Re-sorting or Re-grouping?	(see example below)

2. What does the Acad Org “REES” stand for?. **Russ, East Euro & Eurasian [Studies]**

DASHBOARD	Academic Structure Components
REPORT TAB	Named Academic Org
SELECTION CRITERIA	<i>Could choose REES or just scan list which is in alpha order</i>
VIEW	(n/a)
Any Re-sorting or Re-grouping?	(n/a)

3. What are the organizational subdivisions in the School of Education, below Department level? **(answer below)** Which one has a further level of “child” org? **SOCSCIPOL**

CURRICSTUD: Curriculum Studies & Teacher Ed

LRNDESTECH: Learning, Design & Tech

PSYCHSTUD: Psych Studies in Education

SOCSCIPOL: Social Science, Policy & Education Practive

STEP: Stanford Teacher Education Program

DASHBOARD	Academic Structure Components
REPORT TAB	Named Academic Org Hierarchy
SELECTION CRITERIA	<i>Could limit to EDUCATION or just scan</i>
VIEW	(n/a)
Any Re-sorting or Re-grouping?	(n/a)

Activity 2: Academic Offerings

DEMO QUESTION: What study fields offer a Master of Science (MS) degree option in the School of Engineering? Most also offer an Engineer degree option; which do not?

DASHBOARD	Academic Offerings
REPORT TAB	Degree-Granting Plans
SELECTION CRITERIA	Plan Owning School = School of Engineering
VIEW	(n/a)
Any Re-sorting or Re-grouping?	Re-grouping by Study Field is helpful

	ENG	MS	Engineer (Eng)
Aeronautics and Astronautics	ENG	AA-ENG	Aeronautics & Astro (Eng)
	MS	AA-MS	Aeronautics & Astro (MS)
Bioengineering	MS	BIOE-MS	Bioengineering (MS)
Chemical Engineering	ENG	CHEME-ENG	Chemical Engineering (Eng)
	MS	CHEME-MS	Chemical Engineering (MS)
Civil and Environmental Engineering	ENG	CEE-ENG	Civil & Envir Engr (Eng)
	MS	CEE-MS	Civil & Envir Engr (MS)
Computational and Mathematical Engineering	MS	CME-MS	Comput & Math Engr (MS)
Computer Science	MS	CS-MS	Computer Science (MS)
Electrical Engineering	ENG	EE-ENG	Electrical Engineering (Eng)
	MS	EE-MS	Electrical Engineering (MS)
Engineering	ENG	ENGR-ENG	Engineering (Eng)
	MS	ENGR-MS	Engineering (MS)
Management Science and Engineering	ENG	MGTSC-ENG	Mgmt Sci & Engineering (Eng)
	MS	MGTSC-MS	Mgmt Sci & Engineering (MS)
Materials Science and Engineering	ENG	MATSC-ENG	Materials Science & Engr (Eng)
	MS	MATSC-MS	Materials Science & Engr (MS)
Mechanical Engineering	ENG	ME-ENG	Mechanical Engineer (Eng)
	MS	ME-MS	Mechanical Engineer (MS)
Scientific Computing and Computational Mathematics	MS	SCCM-MS	Sci Comp & Comp Math (MS)

The above fields all offer an MS; all but the four below also offer an Engineer degree:

- Bioengineering
- Computational and Mathematical Engineering
- Computer Science
- Scientific Computing and Computational Mathematics

PRACTICE LOOKING AT OTHER REPORT TABS IN THIS DASHBOARD

- Which schools have non-degree-granting plans set up for Students of New Faculty? (Pick a good view.)
- As an undergraduate, can you do a Minor or Secondary Major in Chinese?

Activity 2: ANSWERS & HOW THEY WERE GOTTEN

1. Which schools have non-degree-granting plans set up for Students of New Faculty?

DASHBOARD	Academic Offerings
REPORT TAB	Non-Degree-Granting Plans
SELECTION CRITERIA	
VIEW	Students of New Faculty
Any Re-sorting or Re-grouping?	

Answer: **GSB, H&S, Engineering, & Medicine**

2. As an undergraduate, can you do a Minor or Secondary Major in Chinese? **YES**

DASHBOARD	Academic Offerings
REPORT TAB	All Programs/Plans/Subplans (only one with Minors/Sec)
SELECTION CRITERIA	Plan Owning School = Humanities & Sciences
VIEW	Acad Org View (the default)
Any Re-sorting or Re-grouping?	Helps to bring Study Field over to the left

■ Activity 3: Degrees Conferred

DEMO QUESTIONS: Which UG majors had the least number of graduates in the past year?

DASHBOARD	Degrees Conferred
REPORT TAB	Degree Study Field Top UG Majors
SELECTION CRITERIA	(default)
VIEW	<i>Look at the tabular report under the graph, at year 2015</i>
Any Re-sorting or Re-grouping?	Re-sorting the 2015 rank number is helpful

Are the number of BAS degrees going up or down?

DASHBOARD	Degrees Conferred
REPORT TAB	Degree Study Field Totals
SELECTION CRITERIA	Degree Code = BAS
VIEW	<i>(look at chart)</i>
Any Re-sorting or Re-grouping?	

PRACTICE IN THIS DASHBOARD

1. Does H&S give out more BA's or more BS's? Which is greater and by about how much?
2. Over the past 5 summer-start years, is the number of MDs granted by the School of Medicine rising or falling?

Activity 3: ANSWERS & HOW THEY WERE GOTTEN

1. Does H&S give out more BA's or more BS's? Which is greater and by about how much?
It varies from year to year, but there are roughly 3 times as many BA's as BS's

DASHBOARD	Degrees Conferred
REPORT TAB	Degree Study Field Totals
SELECTION CRITERIA	School = Humanities and Sciences, Degree Code = BA, BS (and could include BAS) or could do B-M-D Degree Level Code = B
VIEW	Totals by Degree
Any Re-sorting or Re-grouping?	

Answer: **GSB, H&S, Engineering, & Medicine**

2. Over the past 5 summer-start years, is the number of MDs granted by the School of Medicine rising or falling? **It has gone up and down.**

DASHBOARD	Degrees Conferred
REPORT TAB	Degree Study Field Totals
SELECTION CRITERIA	School = School of Medicine Degree Code = MD
VIEW	(can just look at graph)
Any Re-sorting or Re-grouping?	

■ Activity 4: Plan and Term Enrollment

DEMO QUESTIONS:

- **In the School of E3, how many undergrads are currently enrolled? How many master's students and PhD's? What about 10 years ago?**

DASHBOARD	Plan and Term Enrollment
REPORT TAB	Plan Enrollment Counts by Term
SELECTION CRITERIA	School = School of Earth,Energy,EnvSci
VIEW	(default - By Degree By Program is ok)
Any Re-sorting or Re-grouping?	Helpful to put B-M-D at the top and add subtotals

2016: UG 121, Master's+Doctoral 437

Census(S): 102, 421

2006: UG 76, Master's+Doctoral 280

Census(S): 58, 252

Census will be lower, from timing & trumping (e.g. coterm count splits).

- **In the School of Education, produce a list of PhD students that have been enrolled over the past year.**

DASHBOARD	Plan and Term Enrollment
REPORT TAB	Plan Enrollment Student List
SELECTION CRITERIA	School = Graduate School of Education Term Code 1152 to 1162
Any Re-sorting or Re-grouping?	Could put subplan at left to list students by subplan

- **Show the enrollment history for student 04747069 over quarters 0992 to 1098.**

DASHBOARD	Plan and Term Enrollment
REPORT TAB	Term Enrollment History for a Student
SELECTION CRITERIA	EMPLID = 04747069, Term 0992 - 1098

PRACTICE IN THIS DASHBOARD

1. This fall (1162), which H&S major has the highest BAS enrollment?
2. Provide a list of all the students pursuing a PhD at the GSB this fall (1162).
3. What degrees did student 05393700 pursue, starting which fall? (try a range of 1078-1128)

Activity 4: ANSWERS & HOW THEY WERE GOTTEN

1. This fall (1162), which H&S major has the highest BAS enrollment? **Economics**

REPORT TAB	Plan Enrollment Counts by Term
------------	--------------------------------

2. Provide a list of all the students pursuing a PhD at the GSB this fall (1162). **11 students**

REPORT TAB	Plan Enrollment Student List
------------	------------------------------

3. What degrees did student 05393700 pursue, starting which fall? (try a range of 1078-1128) **History MA and JSD at the Law School, both starting in 1092.**

REPORT TAB	Term Enrollment History for a Student
------------	---------------------------------------

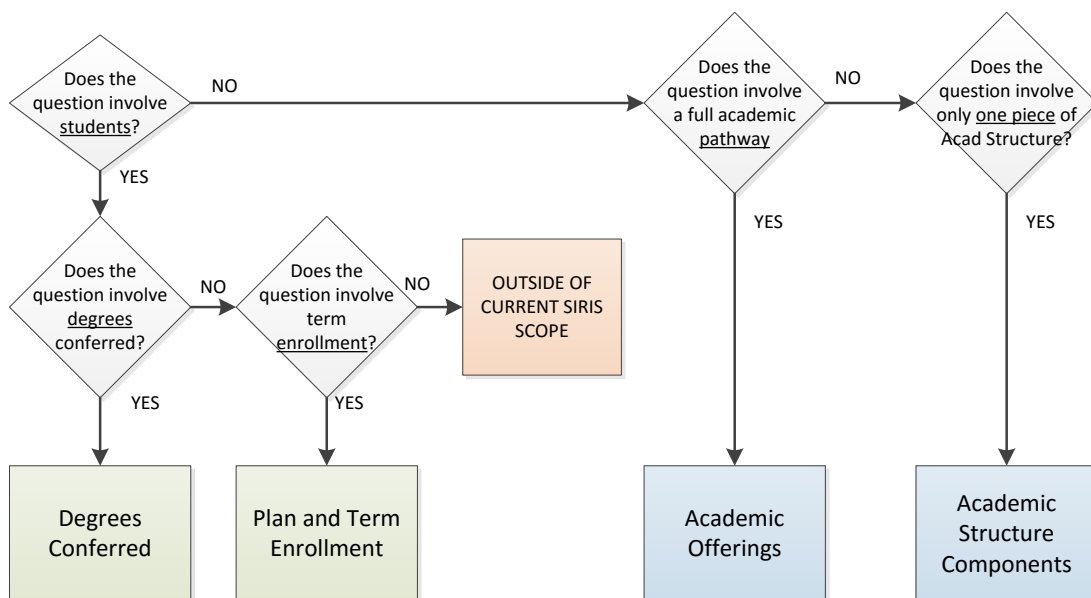
Scavenger Hunt



Here's an opportunity to start using SIRIS as a resource for finding out information. For each question in the activity, you'll need to:

- **Pick the right dashboard to use.** A good rule of thumb is to first think about whether the question involves students or not. Check the Reference Guide and mouseovers..
- **Pick the right report tab to use.** Use the mouseovers to help you decide and/or just play around to get a feel for each report.
- **Change the selection criteria as needed,** at the top of the page.
- **Scan the report to find the information requested.** In some cases re-sorting or re-ordering the columns may help you find the answer more quickly.

After the scavenger hunt is over, we'll share what we learned: the information we found, how we found it, and what we learned about SIRIS!



BASE SET OF SCAVENGER HUNT QUESTIONS

1. How many undergraduates enrolled in the fall of 2013-2014 (1142) were pursuing a combined BAS degree? What about in the fall of 2014-15?
2. Which are the doctoral-level degrees currently offered at Stanford?
3. Looking at professional degree conferrals only (MBA, JD, MD), in the summer start year 2014-15, which group had more female degree recipients than male?
4. Which PhD program in the School of Earth, Energy, and Environmental Sciences had the most enrolled students in the fall of 2014-2015? What about 10 years ago?
5. What degrees are offered by the Graduate School of Business?
6. What was the top UG Major, among UG degree recipients, in the summer-start years 2004, 2009, and 2014?
7. What are the Acad Program and Acad Plan codes for the non-degree-granting Stegner Creative Writing Program?
8. In the School of Engineering what are the possible subplans for someone pursuing an MS in Civil and Environmental Engineering?

BONUS SET OF SCAVENGER HUNT QUESTIONS

1. What degree programs in the School of Engineering are not offered at the undergraduate level?
2. In the Linguistics PhD program, how many of the students actively enrolled this fall were also here last fall, and how many are new?
3. In the summer start year of 2011-12, there were two smaller doctoral programs (aggregated to school level) which had no URM (Under-Represented Minority) recipients, which were they
4. In the School of Engineering, there is a subplan for "Decision and Risk Analysis". What is the code for that Subplan and what Plan and Program is it under?
5. What does the Acad Org DCI stand for?
6. Three-part question:
 - i. Part 1: In the summer start academic year of 2014-2015, which school conferred the most master's (by far!)?
 - ii. Part 2: Which school conferred the most PhDs?
 - iii. Part 3: What were the answers to the same questions for 2010-2011?
7. How many students were enrolled in the East Asian Studies academic program in fall term 2014-2015? Were any non-degree seeking students enrolled—if so, how many? What were the numbers for the fall term of 2013-2014?
8. What two academic departments was student 04851861 involved with? (Use the time period 1002 to 1052)